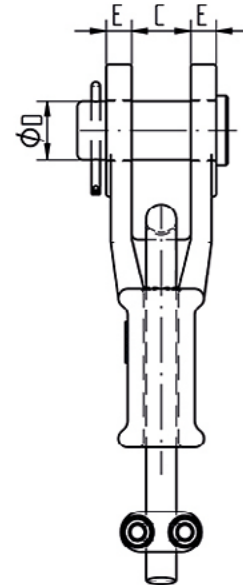
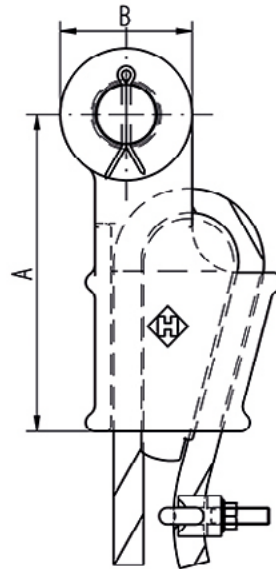


OPEN WEDGE SOCKET WITH PIN



Material	:	Cast steel
Working Load Limit	:	20% of the MBL
Finish	:	Painted or Galvanised (< Type No. 6 standard galvanised)
Temperature Range	:	-40°C up to +200°C
Standard Certification	:	Certificate of Conformity 3.1 material certificate EN 10204

Non-standard sizes or custom products available on request.



NR.	Rope Ø		Article number		MBL tons	A	B	C	ØD	E	Weight kg ±
	mm	inch	painting RAL 5013 blue	galvanised							
0.5	9-10	3/8	-	OWSP0,5G	10	146	47	20,5	20	11	1,7
1	11-13	1/2	-	OWSP1G	16	146	57	25,5	25	12	2,3
2	14-16	5/8	-	OWSP2G	25	176	70	32	30	14	3,9
3	17-19	3/4	-	OWSP3G	32	212	80	38	35	16	6,1
4	20-22	3/4	-	OWSP4G	45	240	96	44	41	19	9,3
5	23-26	1	-	OWSP5G	70	274	114	51	51	22	14,8
6	27-29	1 1/8	OWSP6P	OWSP6G	100	310	130	57	57	25	21,1
7	30-33	1 1/4	OWSP7P	OWSP7G	110	350	146	63	63	28	32,8
8	34-36	1 3/8	OWSP8P	OWSP8G	125	400	148	69	63	28	39,3
9	37-40	1 1/2	OWSP9P	OWSP9G	150	450	160	76	70	30	52,5
10	41-43	1 5/8	OWSP10P	OWSP10G	200	500	174	76	76	33	67,5
11	44-48	1 3/4 - 1 7/8	OWSP11P	OWSP11G	260	550	200	89	89	39	98,2
12	49-53	2	OWSP12P	OWSP12G	280	650	200	101	95	46	122,5
13	56	2 1/4	OWSP13P	OWSP13G	360	660	250	113	108	53	178,4
14	63	2 1/2	OWSP14P	OWSP14G	450	840	270	127	121	60	281
15	75	3	OWSP15P	OWSP15G	520	1000	300	146	133	76	469
16	81-86	3 1/4 - 3 3/8	OWSP16P	OWSP16G	625	1100	300	159	140	79	610