


STANDARD REEVE BLOCK 1 SHEAVE



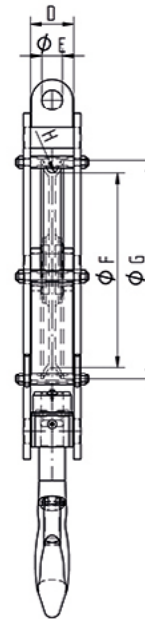
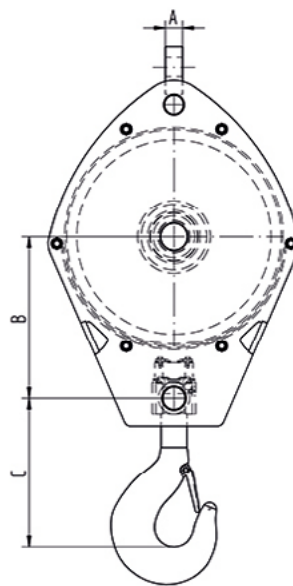
Safety Factor	:	4 times
Finish	:	Painted
Temperature Range	:	-20°C up to +200°C (-40°C on request)
Standard Certification	:	Certificate of Conformity Hook Certificate



 Several options for painting according ISO 12944 on request.

Proof Load Certificate on request.

Non-standard sizes or custom products available on request.



SWL	Wire	ØF	G	Weight
tons	mm	mm	mm	kg ±
5	10	220	250	80
7,5	11/12	250	285	100
10	13/14	285	325	125
12	15/16	315	360	160
16	17/18	355	410	200
20	19/20	400	460	250
25	21/22	450	515	350
32	23/26	520	590	400
40	27/30	560	630	550
50	31/35	630	720	700
60	36	720	810	800