


HOOK BLOCK SPEED REEVE 5 SHEAVES



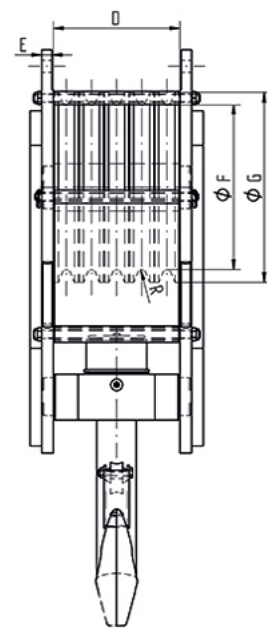
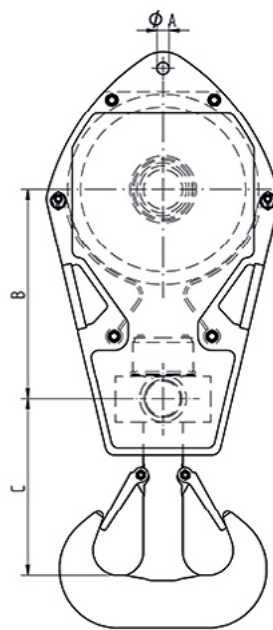
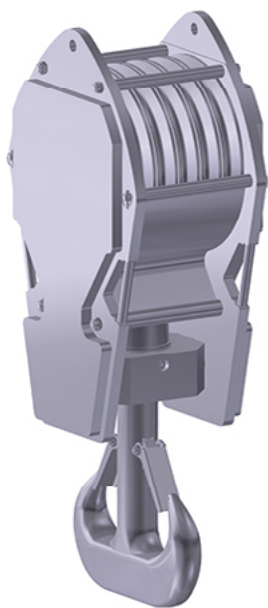
Safety Factor	:	4 times
Finish	:	Painted
Temperature Range	:	-20°C up to +200°C (-40°C on request)
Standard Certification	:	Certificate of Conformity Hook Certificate



 Several options for painting according ISO 12944 on request.

Proof Load Certificate on request.

Non-standard sizes or custom products available on request.



SWL	Wire	ØF	ØG	Weight
tons	mm	mm	mm	kg ±
25	10	230	250	320
32	11/12	250	285	400
40	13/14	285	325	500
50	15/16	315	360	600
63	17/18	355	410	700
80	19/20	400	460	850
100	21/22	450	515	1000
125	23/26	520	590	1300
160	27/30	560	630	1600
200	31/35	630	720	2000
250	36	720	810	2500