


HOOK BLOCK SPEED REEVE 3 SHEAVES



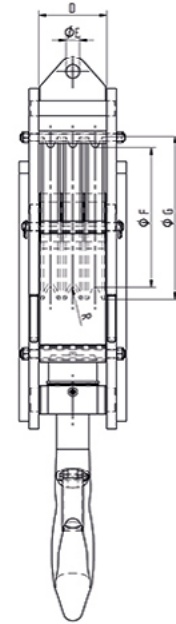
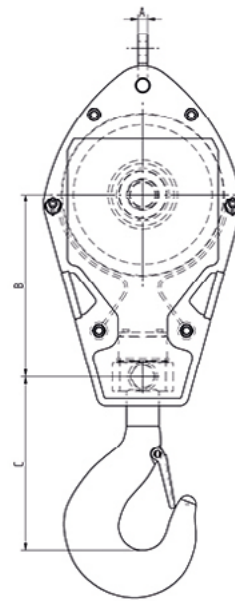
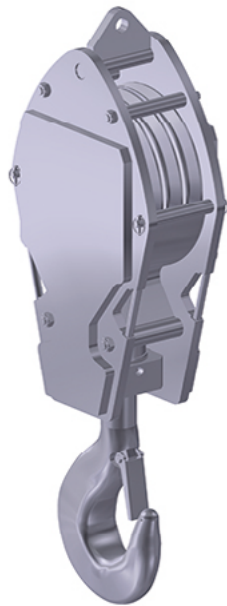
Safety Factor	:	4 times
Finish	:	Painted
Temperature Range	:	-20°C up to +200°C (-40°C on request)
Standard Certification	:	Certificate of Conformity Hook Certificate



 Several options for painting according ISO 12944 on request.

Proof Load Certificate on request.

Non-standard sizes or custom products available on request.



SWL	Wire	ØF	ØG	Weight
tons	mm	mm	mm	kg ±
15	10	230	250	180
20	11/12	250	285	200
25	13/14	285	325	250
32	15/16	315	360	400
40	17/18	355	410	500
50	19/20	400	460	600
63	21/22	450	515	700
80	23/26	520	590	800
100	27/30	560	630	1000
120	31/35	630	720	1250
150	36	720	810	1600