


HOOK BLOCK SPEED REEVE 7 SHEAVES



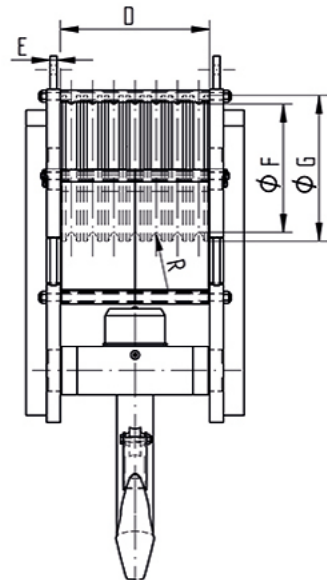
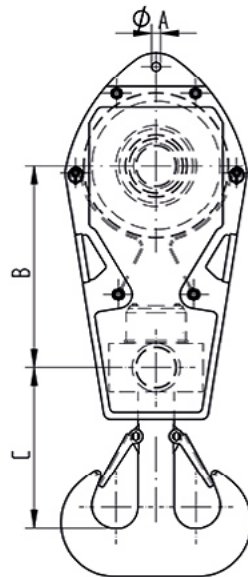
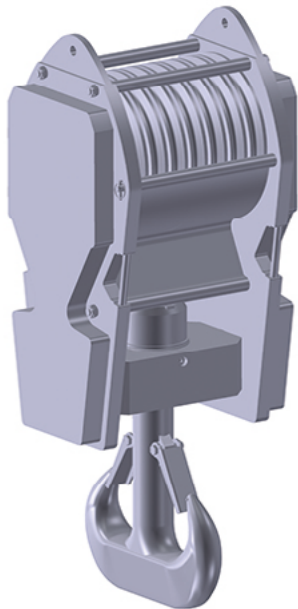
Safety Factor	:	4 times
Finish	:	Painted
Temperature Range	:	-20 °C up to +200 °C (-40 °C on request)
Standard Certification	:	Certificate of Conformity Hook Certificate



 Several options for painting according ISO 12944 on request.

Proof Load Certificate on request.

Non-standard sizes or custom products available on request.



SWL	Wire	ØF	ØG	Weight
tons	mm	mm	mm	kg ±
100	17/18	355	410	1200
125	19/20	400	460	1500
160	21/22	450	515	2000
200	20/26	520	590	2500
250	27/30	560	630	3000
320	31/35	630	720	4000
400	36	720	810	5000