

# CRX MOORING SWIVEL



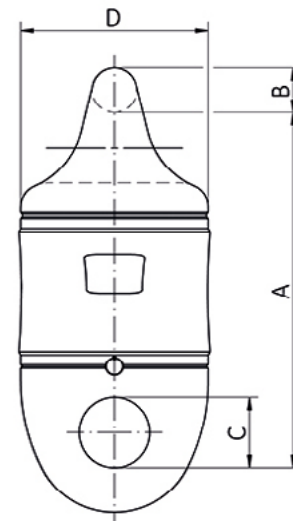
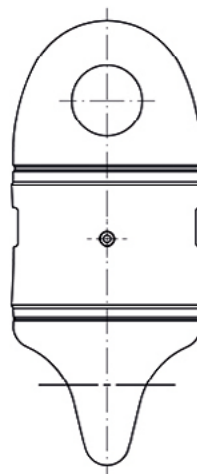
|                        |   |   |
|------------------------|---|---|
| Material               | : | Alloy steel quenched and tempered   |
| Steel Grade            | : | R4 or R5  |
| Finish                 | : | Painted   |
| Temperature Range      | : | -40°C up to +200°C  |
| Standard Certification | : | Certificate of Conformity<br>DNV-OS-E302<br>DNV Type approval<br>ABS Type approval R4<br>ABS Type approval R5 |



TYPE APPROVED PRODUCT



Non-standard sizes or custom products available on request.



## Grade R4 - Painted RAL 5013 blue

| Article number | Size | Kenter  | PL   | MBL   | A   |          | B   |      | C   |         | D   |          | Weight ± |      |
|----------------|------|---------|------|-------|-----|----------|-----|------|-----|---------|-----|----------|----------|------|
|                | inch | inch    | kN   | kN    | mm  | inch     | mm  | inch | mm  | inch    | mm  | inch     | kg       | lbs  |
| CRX-2-GR4      | 2    | 2 - 2 ½ | 2327 | 2952  | 450 | 17 23/32 | 51  | 2    | 80  | 3 5/32  | 220 | 8 21/32  | 100      | 220  |
| CRX-21/2-GR4   | 2 ½  | 2 ½ - 3 | 3440 | 4364  | 540 | 21 ¼     | 64  | 2 ½  | 100 | 3 15/16 | 275 | 10 13/16 | 187      | 412  |
| CRX-3-GR4      | 3    | 3 - 3 ½ | 4731 | 6001  | 605 | 23 13/16 | 76  | 3    | 120 | 4 23/32 | 325 | 12 13/16 | 284      | 626  |
| CRX-31/2-GR4   | 3 ½  | 3 ½ - 4 | 6310 | 8004  | 670 | 26 3/8   | 89  | 3 ½  | 140 | 5 ½     | 380 | 14 31/32 | 427      | 941  |
| CRX-4-GR4      | 4    | 4 - 4 ½ | 8054 | 10217 | 755 | 29 23/32 | 102 | 4    | 160 | 6 5/16  | 435 | 17 1/8   | 627      | 1382 |

## Grade R5 - Painted RAL 1004 yellow

| Article number | Size | Kenter  | PL   | MBL   | A   |          | B   |      | C   |         | D   |          | Weight ± |      |
|----------------|------|---------|------|-------|-----|----------|-----|------|-----|---------|-----|----------|----------|------|
|                | inch | inch    | kN   | kN    | mm  | inch     | mm  | inch | mm  | inch    | mm  | inch     | kg       | lbs  |
| CRX-2-GR5      | 2    | 2 - 2 ½ | 2704 | 3447  | 450 | 17 23/32 | 51  | 2    | 80  | 3 5/32  | 220 | 8 21/32  | 100      | 220  |
| CRX-21/2-GR5   | 2 ½  | 2 ½ - 3 | 3997 | 5096  | 540 | 21 ¼     | 64  | 2 ½  | 100 | 3 15/16 | 275 | 10 13/16 | 187      | 412  |
| CRX-3-GR5      | 3    | 3 - 3 ½ | 5498 | 7009  | 605 | 23 13/16 | 76  | 3    | 120 | 4 23/32 | 325 | 12 3/16  | 284      | 626  |
| CRX-31/2-GR5   | 3 ½  | 3 ½ - 4 | 7332 | 9348  | 670 | 26 3/8   | 89  | 3 ½  | 140 | 5 ½     | 380 | 14 31/32 | 427      | 941  |
| CRX-4-GR5      | 4    | 4 - 4 ½ | 9359 | 11932 | 755 | 29 3/32  | 102 | 4    | 160 | 6 5/16  | 435 | 17 1/8   | 627      | 1382 |