

# CR SOCKET DNV-OS-E304 ABS OFFSHORE STANDARD



Material	:	Cast steel - Grade 4
Working Load Limit	:	20% of the MBL
Finish	:	Painted or Galvanised (< Type no. 522 standard galvanised)
Temperature Range	:	-40°C up to +200°C
Standard Certification	:	Certificate of Conformity 3.2 Material Certificate EN 10204 DNV-OS-E304/ABS Mooring DNV Type Approval <sup>1</sup> ABS Type Approval <sup>2</sup>



TYPE APPROVED PRODUCT



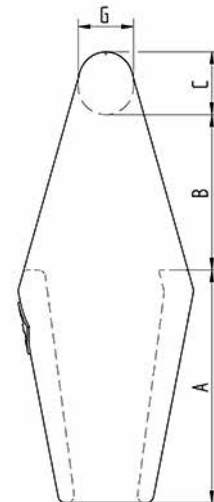
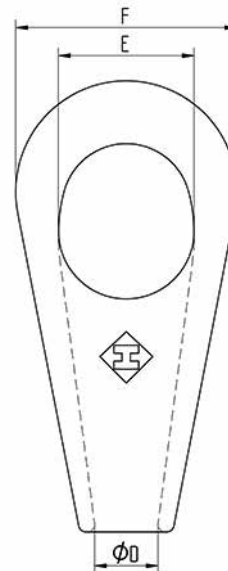
DNV-GL

CR sockets give the best possible connection between a chain and a rope anchoring system.



These sockets include our non-rotating system (NRS-system) which prevents the tamp from turning or slipping out of the cone and guarantees a high performance connection.

**Non-standard sizes or custom products available on request.**



NR.	Rope Ø		Article number		MBL tons	A	B	C	ØD	E	F	G	Weight kg ±
	mm	inch	paint RAL 5013 blue	galvanised									
512	31-36	1 ¼ - 1 ¾	-	CR512G	140	140	85	38	39	75	124	35	7
517	37-42	1 ½ - 1 ⅝	-	CR517G	160	160	110	42	44	92	150	38	11
519	43-48	1 ¾ - 1 ⅞	-	CR519G	200	188	128	50	51	110	180	45	18
522	49-54	2 - 2 ½	CR522P	CR522G	250	215	125	55	57	115	200	50	25
524	55-60	2 ¼ - 2 ⅝	CR524P	CR524G	300	230	145	65	63	135	230	57	35
526	61-68	2 ½ - 2 ⅝	CR526P	CR526G	400	250	160	75	73	160	262	65	51
527	69-75	2 ¾ - 2 ⅞	CR527P	CR527G	500	280	175	80	79	171	278	70	62
528	76-80	3 - 3 ⅛	CR528P	CR528G	600	315	210	85	86	184	300	75	75
529	81-86	3 ¼ - 3 ⅝	CR529P	CR529G	700	340	205	100	92	204	320	90	93
530	87-93	3 ½ - 3 ⅝	CR530P	CR530G	800	360	220	105	99	215	340	95	110
531	94-102	3 ¾ - 4	CR531P	CR531G	900	380	240	110	108	234	376	100	141
533	108-115	4 ¼ - 4 ½	CR533P	CR533G	1000	450	260	125	120	252	400	110	186
540	122-130	5	CR540P	CR540G	1250	517	293	140	140	275	460	125	317

<sup>1</sup> When DNV-GL Product Certificate for Mooring is required, the test program as given in DNV-OS-E304 shall be followed.

<sup>2</sup> When ABS Product Certificate for Mooring is required, the test program as given in ABS Offshore Mooring Guide shall be followed.