

CRX MOORING SWIVEL

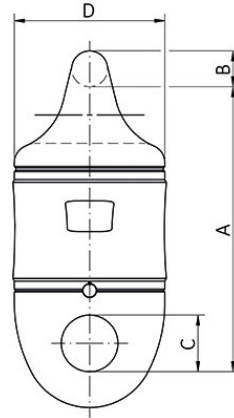
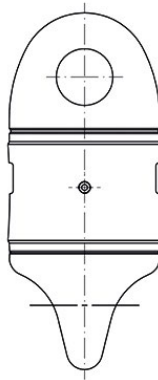


Material	:	Alloy steel quenched and tempered
Steel Grade	:	R4 or R5
Finish	:	Painted
Temperature Range	:	-40 °C up to +180 °C
Standard Certification	:	Certificate of Conformity DNV-OS-E302 DNV Type approval ABS Type approval R4 ABS Type approval R5

TYPE APPROVED PRODUCT
DNV•GL



Non-standard sizes or custom products available on request.



Grade R4 - Painted RAL 5013 blue

Article number	Size	Kenter	PL	MBL	A	B	C	D	Weight ± kg
	inch	inch	kN	kN	mm				
CRX-2-GR4	2	2 - 2 ½	2327	2952	450	51	80	220	100
CRX-21/2-GR4	2 ½	2 ½ - 3	3440	4364	540	64	100	275	187
CRX-3-GR4	3	3 - 3 ½	4731	6001	605	76	120	325	284
CRX-31/2-GR4	3 ½	3 ½ - 4	6310	8004	670	89	140	380	427
CRX-4-GR4	4	4 - 4 ½	8054	10217	755	102	160	435	627

Grade R5 - Painted RAL 1004 yellow

Article number	Size	Kenter	PL	MBL	A	B	C	D	Weight ± kg
	inch	inch	kN	kN	mm				
CRX-2-GR5	2	2 - 2 ½	2704	3447	450	51	80	220	100
CRX-21/2-GR5	2 ½	2 ½ - 3	3997	5096	540	64	100	275	187
CRX-3-GR5	3	3 - 3 ½	5498	7009	605	76	120	325	284
CRX-31/2-GR5	3 ½	3 ½ - 4	7332	9348	670	89	140	380	427
CRX-4-GR5	4	4 - 4 ½	9359	11932	755	102	160	435	627