



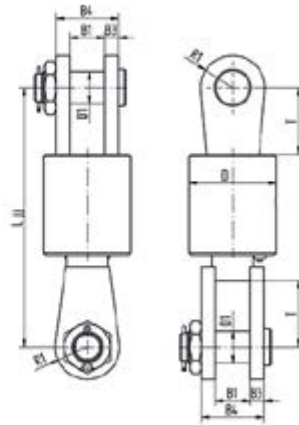
CLOSED BODY SWIVEL JAW JAW

Material	:	High tensile steel
Safety Factor	:	5 times SWL
Finish	:	Painted
Temperature Range	:	-4°F up to 356°F
Standard Certification	:	Certificate of Conformity Proof Load Certificate



Upon request also available for underwater use.

Non-standard sizes or custom products available on request.



SWL	Art. nr.	B1	B3	B4	D1	D	L _{jj}	R1	T	Weight
USt	Painted	inch								lbs
18,7	CBS017JJ	2 5/8	1 1/8	4 13/16	2 1/2	6 23/32	18 29/32	2 13/16	5 1/8	130,1
27,6	CBS025JJ	3	1 7/32	5 7/16	2 13/16	7 1/2	22 7/32	2 13/16	5 23/32	185,2
38,6	CBS035JJ	3 1/2	1 5/8	6 23/32	3 1/8	9 13/16	27 7/32	3 1/10	6 29/32	370,4
60,6	CBS055JJ	4 7/16	2	8 7/16	3 29/32	10 5/8	31 1/2	4 1/8	6 29/32	604,1
77,2	CBS070JJ	4 7/16	2 7/32	8 23/32	4 3/8	11 7/16	31 29/32	4 1/2	6 23/32	712,1
93,7	CBS085JJ	5 1/8	3	11	5	13 13/16	34 3/16	5 3/16	6 29/32	1166,2
132,3	CBS120JJ	6 1/8	3 1/2	13 7/32	6	16 29/32	35	6 23/32	7 1/2	1876,1
165,3	CBS150JJ	6 23/32	3 29/32	14 5/8	7	18 1/2	39 1/2	7 1/2	8 5/16	2579,4
220,5	CBS200JJ	7 1/2	4 3/16	16 1/8	7 1/2	20 29/32	45 3/16	8 23/32	9 13/16	3805,2
275,6	CBS250JJ	8 7/16	4 23/32	17 23/32	9 13/16	23 3/8	48 13/16	10 7/32	11	5703,4
330,7	CBS300JJ	9 13/16	6 23/32	23 3/8	11 7/16	29 1/2	53 3/8	11 13/16	11 13/16	9524,0