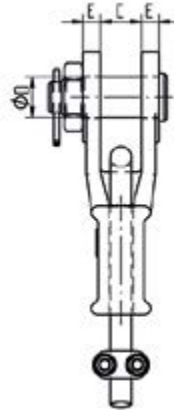
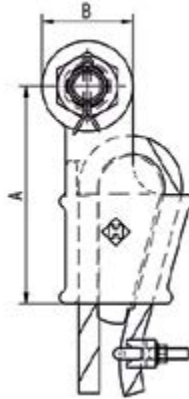




# OPEN WEDGE SOCKET WITH SAFETY PIN

Material	:	Cast steel
Working Load Limit	:	20% of the MBL
Finish	:	Painted or galvanised (< Type no. 6 standard galvanised)
Temperature Range	:	-40°F up to 392°F
Standard Certification	:	Certificate of Conformity 3.1 material certificate EN 10204

**Non-standard sizes or custom products available on request.**



NR.	Rope Ø	Article number		MBL	A	B	C	ØD	E	Weight
	inch	painting RAL 5013 blue	galvanised		USt	inch				
0.5	3/4	-	OWSB0.5G	11,0	5 3/4	1 29/32	13/16	13/16	7/16	3,7
1	1/2	-	OWSB1G	17,6	5 3/4	2 7/32	1	13/16	1/2	5,1
2	5/8	-	OWSB2G	27,6	6 29/32	2 19/16	1 1/16	1 7/32	5/8	8,6
3	3/4	-	OWSB3G	35,3	8 3/16	3 5/8	1 1/2	1 7/16	5/8	13,4
4	7/8	-	OWSB4G	49,6	9 7/16	3 13/16	1 23/32	1 5/8	23/32	20,5
5	1	-	OWSB5G	77,2	10 13/16	4 1/2	2	2	1 29/32	32,6
6	1 1/8	OWSB6P	OWSB6G	110,2	12 7/32	5 5/8	2 7/32	2 1/4	1	46,5
7	1 1/4	OWSB7P	OWSB7G	121,3	13 13/16	5 29/32	2 1/2	2 1/2	1 1/8	72,3
8	1 3/8	OWSB8P	OWSB8G	137,8	15 13/16	5 19/16	2 23/32	2 1/2	1 1/8	86,6
9	1 1/2	OWSB9P	OWSB9G	165,3	17 23/32	6 5/16	2 29/32	2 13/16	1 7/32	115,7
10	1 5/8	OWSB10P	OWSB10G	220,5	19 23/32	6 29/32	2 29/32	2 29/32	1 3/16	148,8
11	1 3/4 - 1 7/8	OWSB11P	OWSB11G	286,6	21 23/32	7 29/32	3 1/2	3 1/2	1 1/2	216,5
12	2	OWSB12P	OWSB12G	308,6	25 5/8	7 29/32	3 29/32	3 29/32	1 13/16	270,1
13	2 1/4	OWSB13P	OWSB13G	396,8	25 29/32	9 19/16	4 1/2	4 5/16	2 5/8	393,3
14	2 1/2	OWSB14P	OWSB14G	496,0	33 3/8	10 5/8	5	4 19/16	2 7/16	619,5
15	3	OWSB15P	OWSB15G	573,2	39 7/16	11 13/16	5 23/32	5 7/32	3	1034,0
16	3 1/4 - 3 3/8	OWSB16P	OWSB16G	688,9	43 3/16	11 13/16	6 5/16	5 1/2	3 3/8	1388,9